



Notice of HS2 ground investigations

What are ground investigations?

Ground investigation surveys help us get a better understanding of the existing ground and groundwater conditions. It's vital that we know about the soil before construction begins so we can build effectively. If you'd like to know more, please visit <https://hs2inhillington.commonplace.is/schemes/proposals/ground-investigation/details> where you can also download our ground investigation guide.

Surveys at Breakspear Road South, starting on 3 April for 10 days

What are we doing?

Affinity Water will be carrying out ground investigation surveys along Breakspear Road South between the junctions of Copthall Road West and Grays Cottages to prepare for the installation of a new pipeline.

The surveys consists of two boreholes being drilled, starting on **3 April** and will last for approximately 10 days, working weekdays between 8am and 6pm as well as Saturday 14 April and Sunday 15 April.

How will this affect you?

There will be temporary traffic lights in place between Copthall Road West and Grays Cottages in both directions on Breakspear Road South as shown on the map overleaf.

Duration of works

- Weekday working hours: 8am to 6pm
- Weekend working hours: 8.30am to 4.30pm on Saturday 14 April and from 9am to 3pm on Sunday 15 April
- Our contractors may also be on site for one hour's start-up and shutdown outside of these times

What to expect

- Background noise from drilling boreholes
- Vegetation clearance on the eastern side of Breakspear Road South
- Temporary access routes and construction sites in fields off Breakspear Road South

For more information contact our helpline (available 24/7) on 08081 434 434 or email hszenquiries@hs2.org.uk. Visit our website at www.gov.uk/hs2

High Speed Two (HS2) Limited
Two Snowhill, Snow Hill Queensway, Birmingham B4 6GA



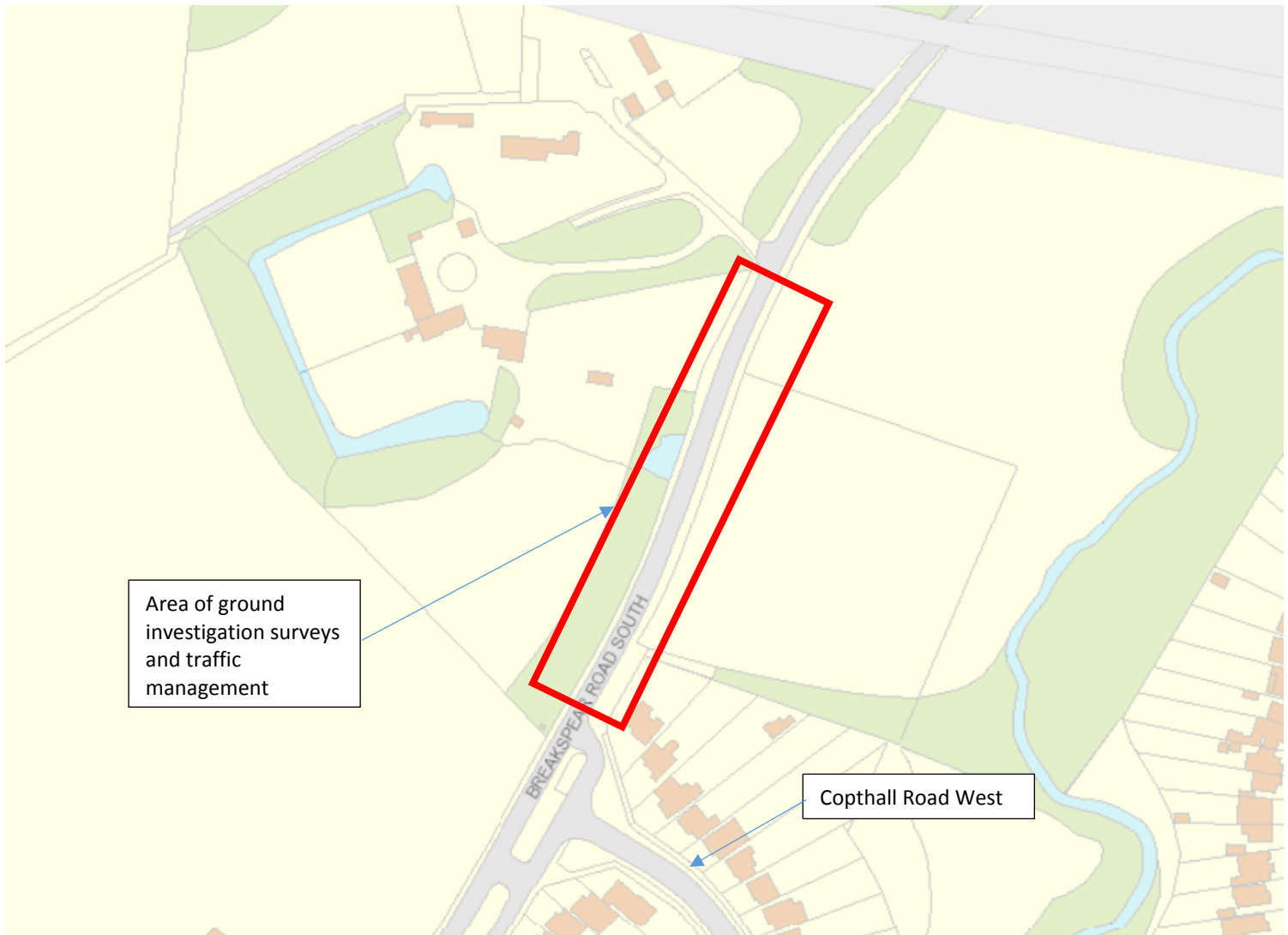
How will this affect you (continued)

To limit the amount of time these works will take we will be working on the weekend of 14 and 15 April. On Saturday 14 April our contractors will work between 8.30am and 4.30pm and on Sunday 15 April work will be between 9am and 3pm. We apologise in advance for any inconvenience this may cause.

We do not anticipate that the local water supply will be affected by these ground investigation surveys.

What we will do

- Inform you in advance of any changes to the dates shown
- Keep all sites safe and secure
- Ensure that the contractor vehicles use agreed routes
- Ensure that all sites are reinstated to the required standard



For more information contact our helpline (available 24/7) on 08081 434 434 or email hszenquiries@hs2.org.uk. Visit our website at www.gov.uk/hs2

High Speed Two (HS2) Limited
Two Snowhill, Snow Hill Queensway, Birmingham B4 6GA



Surveys between HOAC and Harvil Road, starting 6 April for four weeks

What are we doing?

Align, the HS2 contractor for building the Colne Valley Viaduct, will be carrying out ground investigation surveys along the HS2 route between Hillingdon Outdoor Activities Centre (HOAC) and Harvil Road.

These surveys will start on **6 April** and will last approximately for four weeks working weekdays only between 8am and 6pm.

How will this affect you?

The work will involve using drilling equipment to dig inspection pits and boreholes to take samples or measurements. Boreholes will be sunk using large vertical drilling equipment. Our contractors will be working hard to ensure any impacts on residents are kept to a minimum.

The works are not expected to have an impact on any Public Rights of Way and Harvil Road will remain open while surveys are carried out.

There are four boreholes being drilled (highlighted in yellow within the red box on the map overleaf), and our contractors will work hard to ensure that any impacts are kept to a minimum.

For more information about what the proposals are for the route as it travels through the London Borough of Hillingdon, how it is constructed and what we are doing to make it less disruptive, please visit:

<https://hs2inhilligdon.commonplace.is/>

Working hours

- Weekday working hours only
- Working hours between 8am and 6pm
- Our contractors may also be on site for one hour's start-up and shutdown outside of these times
- 24 hour security

What to expect

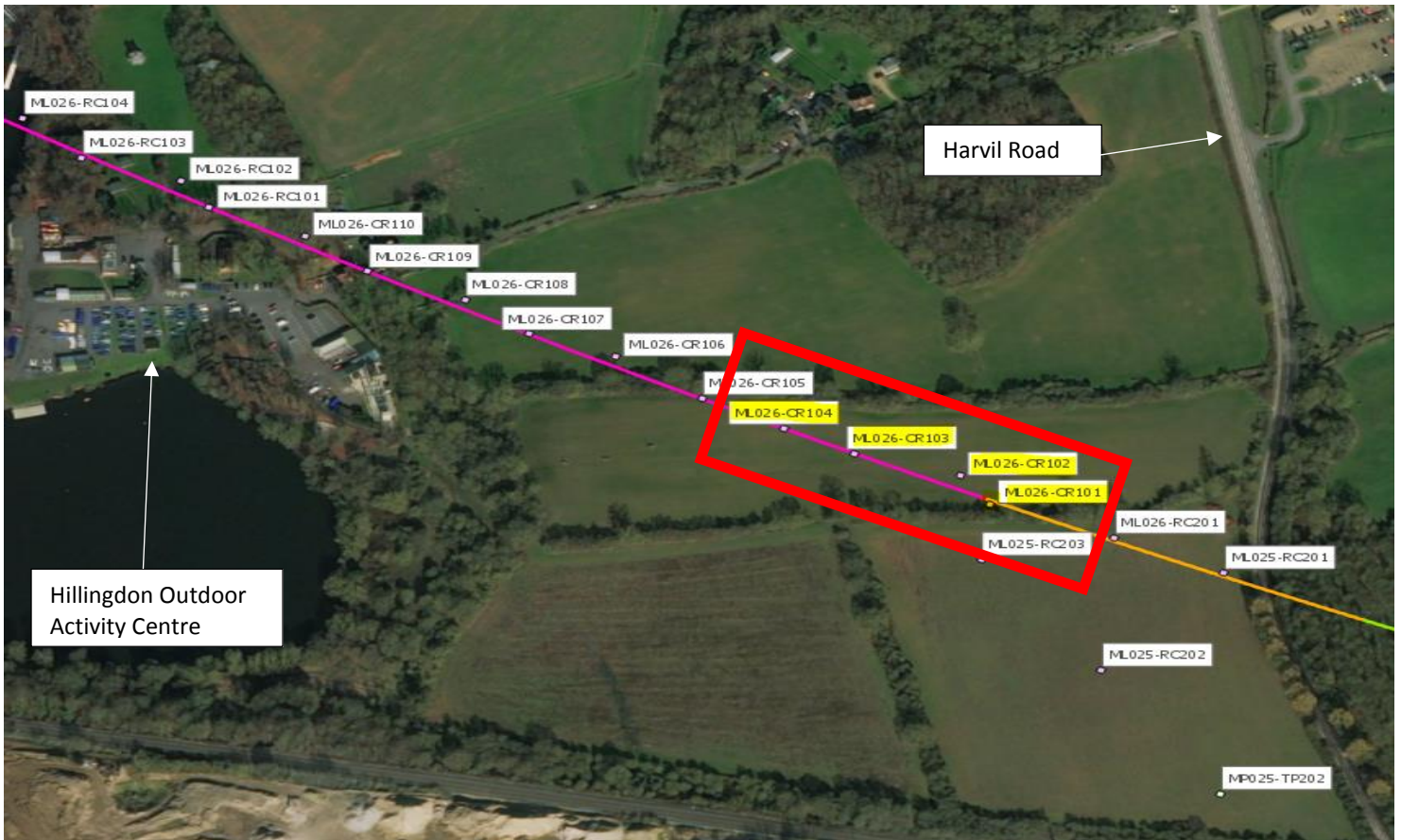
- Background noise from drilling boreholes
- Any sites we set up will have appropriate 24 hour security measures
- A small number of contractor vehicles will use approved roads during these works

What we will do

- Manage any environmental impacts, such as traffic and noise and respect the environment
- Respond promptly to any complaints and take appropriate action
- Inform you of opportunities for you to find out more about the works we are doing

For more information contact our helpline (available 24/7) on 08081 434 434 or email hs2enquiries@hs2.org.uk. Visit our website at www.gov.uk/hs2

High Speed Two (HS2) Limited
Two Snowhill, Snow Hill Queensway, Birmingham B4 6GA



If you have any questions or if you would like to find out more, you can get in touch:

✉ **Write to:** HS2 Helpdesk, Two Snowhill, Snow Hill Queensway, Birmingham, B4 6GA

✉ **Email:** hs2enquiries@hs2.org.uk

☎ **Telephone:** 08081 434 434

<https://hs2inhillington.commonplace.is/>

Please contact us if you would like a free copy of this leaflet in large print, braille, audio or easy read. We can also provide the information in different languages. You are welcome to ask someone to represent you in any discussions with HS2 Ltd.

For more information contact our helpline (available 24/7) on 08081 434 434 or email hs2enquiries@hs2.org.uk. Visit our website at www.gov.uk/hs2

High Speed Two (HS2) Limited
Two Snowhill, Snow Hill Queensway, Birmingham B4 6GA